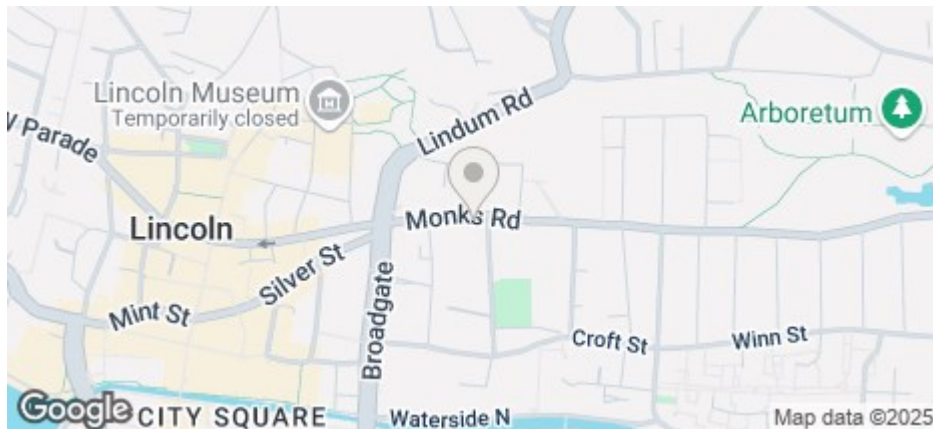




15A Monks Road, Lincoln, LN2 5HL

£611 Per Month

COUNCIL TAX BAND: B



- Five en-suite bedrooms house share
- Deposit only £200pp
- Large open plan basement living space
- Tumble dryer & dishwasher included
- Council Tax Band B
- Price displayed is per person
- Great City Centre location
- Contemporary style
- Walking distance to Lincoln University
- Available for 25/26

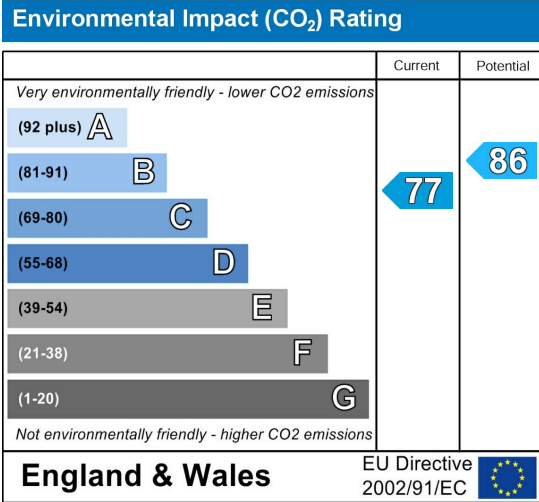
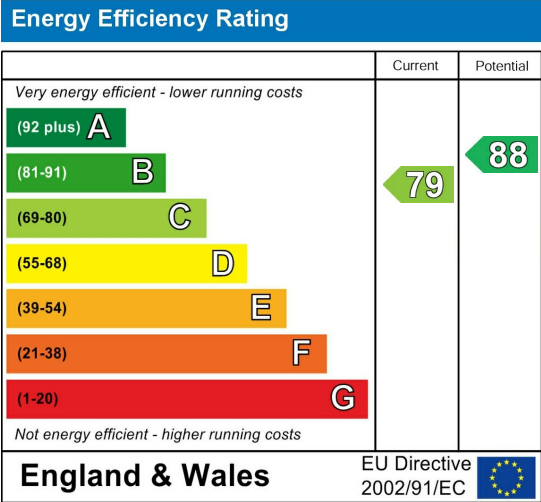
Rights & Restrictions

Right to pass on foot along along the passage or entry leading to and from Monks Road in as direct a route as possible over the yard of the adjoining property being Number 15 Monks Road to and from the lower level and floors of the premises.

For an indication of specific broadband speeds and supply, or coverage in the area, we suggest you visit: <https://checker.ofcom.org.uk/en-gb/broadband-coverage>

For an indication of specific mobile phone speeds and supply, or coverage in the area, we recommend you visit: <https://checker.ofcom.org.uk/en-gb/mobile-coverage#pc=LN12PR&uprn=10013808803>

Unless otherwise stated, there is no known flooding history at this property. To check the flood risk of the area visit: <https://check-long-term-flood-risk.service.gov.uk/postcode>



ROOMS AVAILABLE

Five spacious bedrooms all with en-suites. Close to the City Centre close to shops and bars. Large communal living space. Available to students and recent graduates

Up to 2 parking permits available through City of Lincoln Council permit scheme for a fee. Gas central heating.

Price displayed is as per person per month

The deposit payable on the first day of your tenancy is just ****£200.00**** per person along with the first four weeks rent, after this the rent can be paid in instalments that coincide with your student loan.

The property comes furnished and includes utilities and associated building running costs. Utilities are subject to a fair usage policy as detailed in the attached brochure and the Tenancy Agreement.

Don't miss out on this great property. Contact our friendly team at Cloud Lettings today to arrange your viewing or book a slot online for a time convenient to you!

Call - 01522 802020

email - info@cloudlettings.co.uk

WhatsApp - 07908 557770

Cloud Lettings are a member of the Tenancy Deposit Scheme, ARLA, The Property Ombudsman, and are part of the Propertymark Client Money Protection scheme. Cloud Lettings are also an Associate Agent of the City of Lincoln Trusted Landlord Scheme.

For further details of all tenancy fees, please see our website here:

<http://www.cloudlettings.co.uk/about>

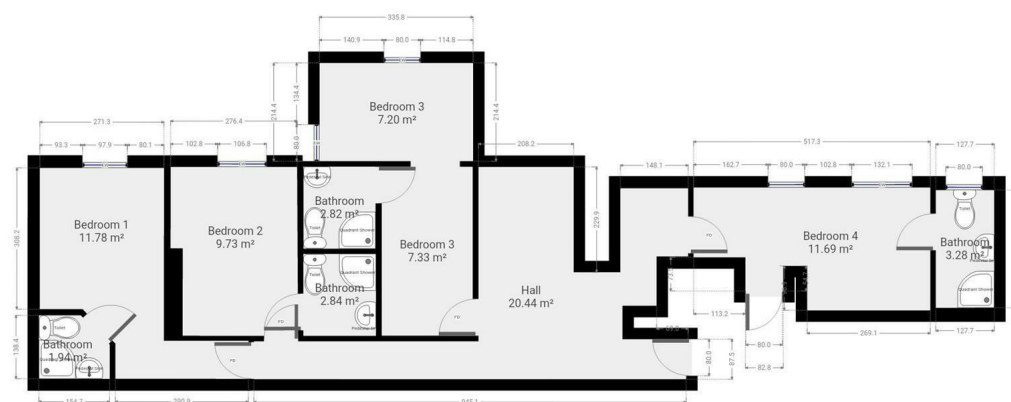
Any information collected from you will be processed in accordance with the General Data Protection Regulation. Full details of how Cloud Lettings Ltd process your information can be found on our website here:

<http://www.cloudlettings.co.uk/about-cloud-lettings/privacy-policy/>.

Terms and conditions apply. Contact the office for more information.



Floor plan measurements are approximate and for illustrative purposes only. While we do not doubt the floor plans accuracy, we make no guarantee, warranty or representation as to the accuracy and completeness of the floor plan. You or your advisors should conduct a careful, independent investigation of the property to determine to your satisfaction as to the suitability of the property for your special requirements.



Floor plan measurements are approximate and for illustrative purposes only. While we do not doubt the floor plans accuracy, we make no guarantee, warranty or representation as to the accuracy and completeness of the floor plan. You or your advisors should conduct a careful, independent investigation of the property to determine to your satisfaction as to the suitability of the property for your special requirements.

Room size measurements are achieved by measuring between internal walls.

Where sloped ceilings are present, room size is measured where the height is a minimum of 1.5m