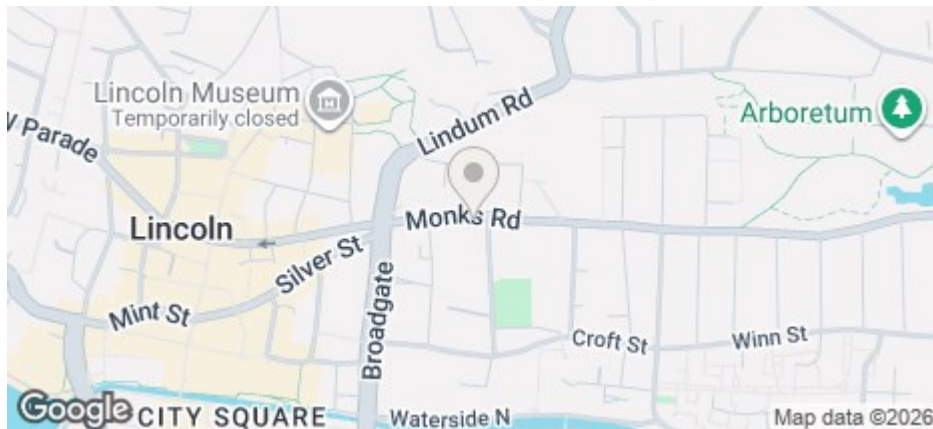




## 15A Monks Road, Lincoln, LN2 5HL

£130 Per Week

COUNCIL TAX BAND: B



- Five en-suite bedrooms house share
- Deposit only £200pp
- Large open plan basement living space
- Tumble dryer & dishwasher included
- Council Tax Band B
- Price displayed is per person
- Great City Centre location
- Contemporary style
- Walking distance to Lincoln University
- Available for 26/27

Rights & Restrictions

Right to pass on foot along along the passage or entry leading to and from Monks Road in as direct a route as possible over the yard of the adjoining property being Number 15 Monks Road to and from the lower level and floors of the premises.

For an indication of specific broadband speeds and supply, or coverage in the area, we suggest you visit: <https://checker.ofcom.org.uk/en-gb/broadband-coverage>

For an indication of specific mobile phone speeds and supply, or coverage in the area, we recommend you visit: <https://checker.ofcom.org.uk/en-gb/mobile-coverage#pc=LN12PR&uprn=10013808803>

Unless otherwise stated, there is no known flooding history at this property. To check the flood risk of the area visit: <https://check-long-term-flood-risk.service.gov.uk/postcode>

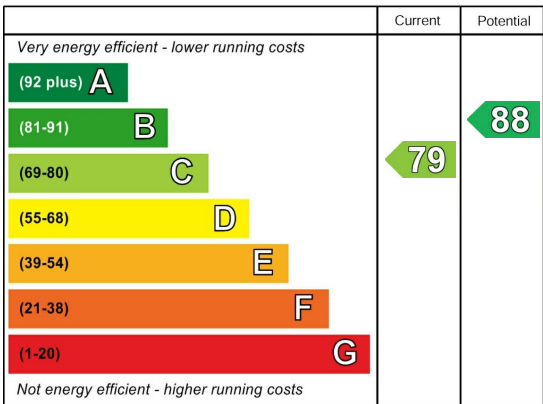


Number of tenants per property	Gas Allowance (Kwh)	Electric Allowance (Kwh)*	Water Allowance (m3)
1	10000	3000	125
2	13000	3400	130
3	16000	4000	165
4	20000	5000	190
5	25000	6000	215
6	30000	7000	240
7	34000	8000	270
8	38000	9000	290
9	41000	10000	310
10	44000	11000	330

If there is no gas in the property (electric heating and hot water) the Electric Allowance Kwh is doubled.

The chart details the maximum usage allowance of gas, water, and electricity for a 50-week tenancy in accordance with the number of tenants for the property (should the tenancy term vary from 50 weeks, the allowance will be apportioned accordingly to cover the term of the tenancy). Should these figures be exceeded the Landlord reserves the right to levy a charge to cover the cost for the additional usage. It is the Tenants responsibility to monitor their own usage.

Energy Efficiency Rating

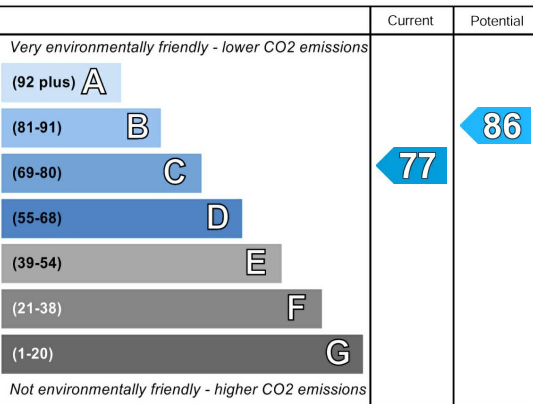


England & Wales

EU Directive  
2002/91/EC



Environmental Impact (CO<sub>2</sub>) Rating



England & Wales

EU Directive  
2002/91/EC



## \*ROOMS AVAILABLE\*

Room 1 - \*RESERVED\*

Room 2 - AVAILABLE 26/27

Room 3 - \*RESERVED\*

Room 4 - \*RESERVED\*

Room 5 - AVAILABLE 26/27- flexible start date from April

Five spacious bedrooms all with en-suites. Close to the City Centre close to shops and bars. Large communal living space.

Up to 2 parking permits available through City of Lincoln Council permit scheme for a fee. Gas central heating.

\*Price displayed is as per person per week\*

The deposit payable on the first day of your tenancy is just **\*\*£200.00\*\*** per person along with the first four weeks rent, after this the rent can be paid in instalments that coincide with your student loan.

The total rent due for the property will increase by £33.82 per week for any non-students (rental shares can be apportioned per tenant, meaning one or more tenants can contribute to this).

Don't miss out on this great property. Contact our friendly team at Cloud Lettings today to arrange your viewing or book a slot online for a time convenient to you!

See downloadable brochure for more details.

Call - 01522 802020

email - [info@cloudlettings.co.uk](mailto:info@cloudlettings.co.uk)

WhatsApp - 07908 557770

The rent as advertised per week is the rent due per person for a student studying a full-time course with at least 21 hours of study in term time per week attending 24 weeks per annum.

The property comes furnished and includes utilities and associated building running costs, including TV licence and Broadband. Utilities are subject to a fair usage policy as detailed in the attached brochure and the Tenancy Agreement.

Cloud Lettings are a member of the Tenancy Deposit Scheme, ARLA, The Property Ombudsman, and are part of the Propertymark Client Money Protection scheme. Cloud Lettings are also an Associate Agent of the City of Lincoln Trusted Landlord Scheme.

For further details of all tenancy fees, please see our website here:  
<http://www.cloudlettings.co.uk/about>

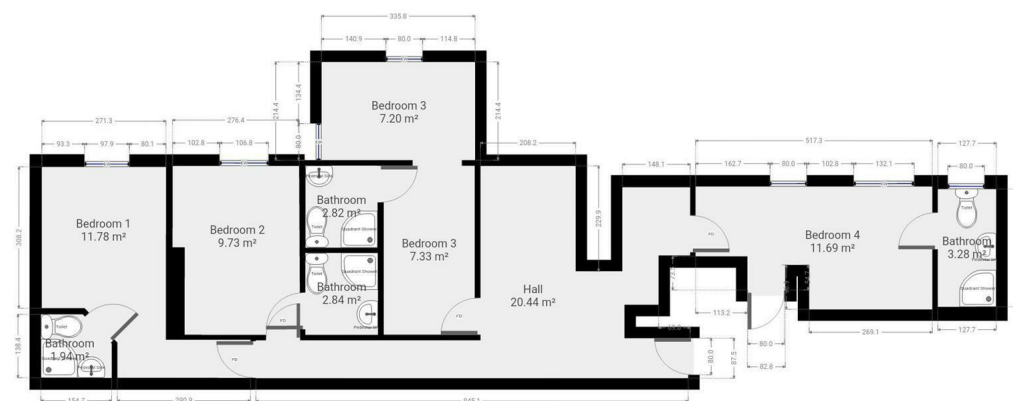
Any information collected from you will be processed in accordance with the General Data Protection Regulation. Full details of how Cloud Lettings Ltd process your information can be found on our website here: <http://www.cloudlettings.co.uk/about-cloud-lettings/privacy-policy/>.

Terms and conditions apply. Contact the office for more information.





Floor plan measurements are approximate and for illustrative purposes only. While we do not doubt the floor plans accuracy, we make no guarantee, warranty or representation as to the accuracy and completeness of the floor plan. You or your advisors should conduct a careful, independent investigation of the property to determine to your satisfaction as to the suitability of the property for your special requirements.



Floor plan measurements are approximate and for illustrative purposes only. While we do not doubt the floor plans accuracy, we make no guarantee, warranty or representation as to the accuracy and completeness of the floor plan. You or your advisors should conduct a careful, independent investigation of the property to determine to your satisfaction as to the suitability of the property for your special requirements.

Room size measurements are achieved by measuring between internal walls.

Where sloped ceilings are present, room size is measured where the height is a minimum of 1.5m