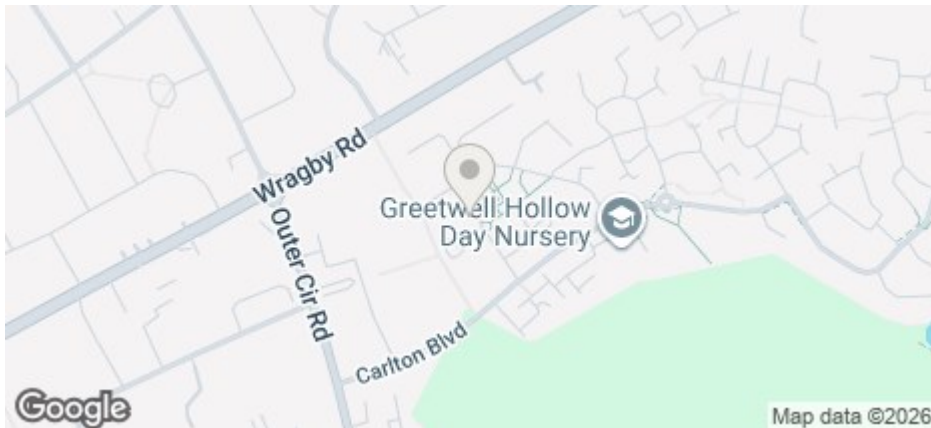




Apartment 47 Navona House Olsen Rise, Lincoln, LN2 4UT

£895 PCM

COUNCIL TAX BAND: A



- Two bedrooms Apartment
- Separate family bathroom
- Fully fitted kitchen with integrated fridge freezer
- Two allocated parking spaces
- Top Floor Flat
- Master bedroom with en suite shower room
- Modern open plan lounge/kitchen
- Electric heating
- Council Tax Band A

Cloud Lettings are delighted to present, this two bedroom apartment located next to the Carlton Centre.

The property comprises of open plan living room and modern fitted kitchen with oven, hob, extractor & integrated fridge freezer. Family bathroom with shower over the bath, two bedrooms with en-suite shower to master bedroom. The property further benefits from two allocated parking spaces. Electric heating.

Contact our friendly team at Cloud today to arrange your viewing:

WhatsApp - 07983 819835
 Call - 01522 802020
 Email - info@cloudlettings.co.uk

Please note viewings cannot be arranged prior to completion of the pre-application forms, which includes an affordability check and a soft credit check, completed through Right Move

Cloud Lettings are a member of the Tenancy Deposit Scheme, ARLA, The Property Ombudsman, and are part of the Propertymark Client Money Protection scheme. Cloud Lettings are also an Associate Agent of the City of Lincoln Trusted Landlord Scheme.

For further details of all tenancy fees, please see our website here:
<http://www.cloudlettings.co.uk/about-cloud-lettings/tenancy-fees/>

Any information collected from you will be processed in accordance with the General Data Protection Regulation. Full details of how Cloud Lettings Ltd process your information can be found on our website here: <http://www.cloudlettings.co.uk/about-cloud-lettings/privacy-policy/>.

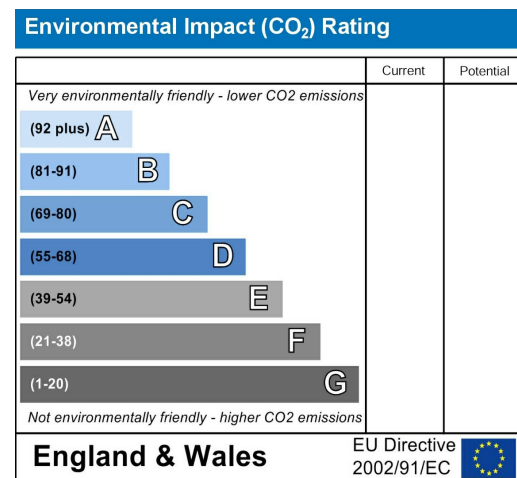
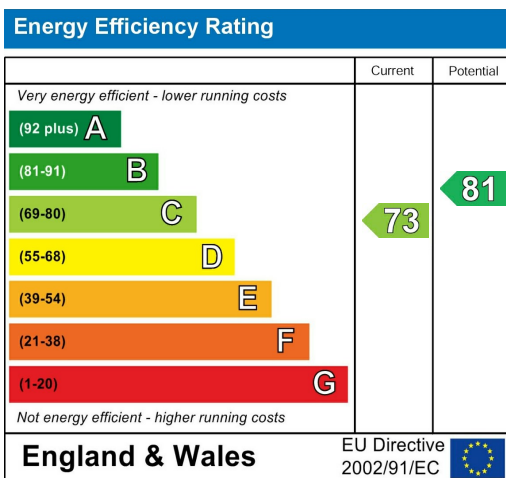
Utilities: The rent does not include utility bills, internet, Council Tax or TV license payments.

Cloud Lettings are a member of the Tenancy Deposit Scheme, ARLA, The Property Ombudsman, and are part of the Propertymark Client Money Protection scheme. Cloud Lettings are also an Associate Agent of the City of Lincoln Trusted Landlord Scheme.

For further details of all tenancy fees, please see our website here:
<http://www.cloudlettings.co.uk/about/fees>

Any information collected from you will be processed in accordance with the General Data Protection Regulation. Full details of how Cloud Lettings Ltd process your information can be found on our website here: <http://www.cloudlettings.co.uk/about-cloud-lettings/privacy-policy/>.

Terms and conditions apply. Contact the office for more information.

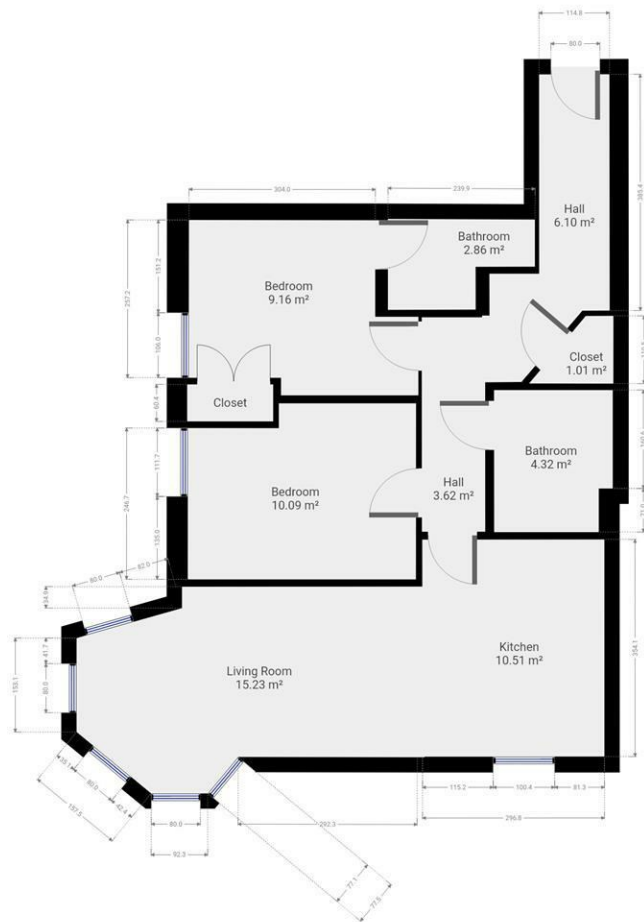




For an indication of specific broadband speeds and supply, or coverage in the area, we suggest you visit: <https://checker.ofcom.org.uk/en-gb/broadband-coverage>

For an indication of specific mobile phone speeds and supply, or coverage in the area, we recommend you visit: <https://checker.ofcom.org.uk/en-gb/mobile-coverage#pc=LN12PR&uprn=10013808803>

Unless otherwise stated, there is no known flooding history at this property. To check the flood risk of the area visit: <https://check-long-term-flood-risk.service.gov.uk/postcode>



Floor plan measurements are approximate and for illustrative purposes only. While we do not doubt the floor plans accuracy, we make no guarantee, warranty or representation as to the accuracy and completeness of the floor plan. You or your advisors should conduct a careful, independent investigation of the property to determine to your satisfaction as to the suitability of the property for your special requirements.

Room size measurements are achieved by measuring between internal walls.
Where sloped ceilings are present, room size is measured where the height is a minimum of 1.5m