

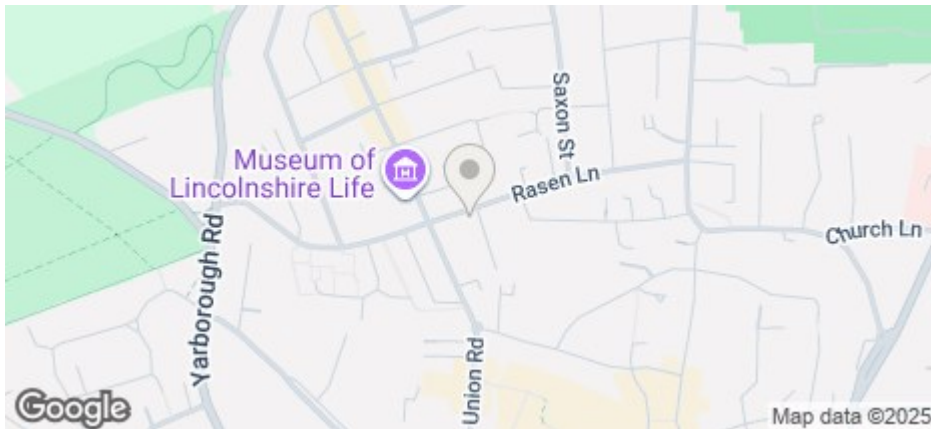


£488 Per Month

COUNCIL TAX BAND: A



95 Rasen Lane, Lincoln, Lincs, LN1 3HA

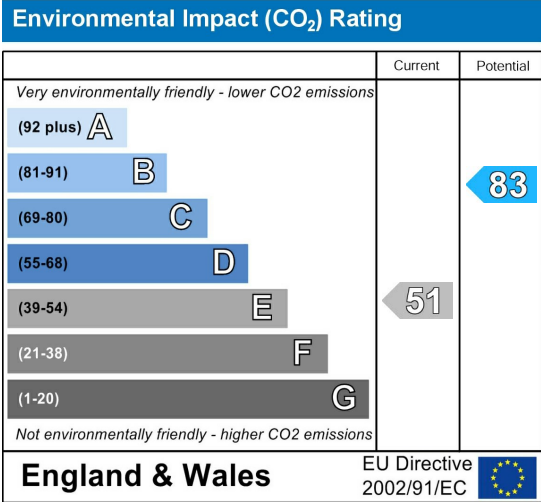
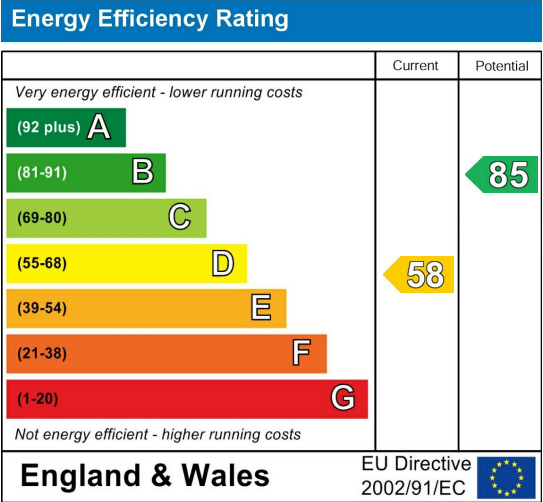


- Deposit Only £200pp
- Furnished
- Walking distance to both universities and Lincoln County Hospital
- Modern kitchen
- Council Tax Band A (included in rent)
- Price displayed is per person based on 4 tenants renting the property
- Close to Bailgate
- Spacious lounge
- Enclosed garden
- AVAILABLE NOW

For an indication of specific broadband speeds and supply, or coverage in the area, we suggest you visit: <https://checker.ofcom.org.uk/en-gb/broadband-coverage>

For an indication of specific mobile phone speeds and supply, or coverage in the area, we recommend you visit: <https://checker.ofcom.org.uk/en-gb/mobile-coverage#pc=LN12PR&uprn=10013808803>

Unless otherwise stated, there is no known flooding history at this property. To check the flood risk of the area visit: <https://check-long-term-flood-risk.service.gov.uk/postcode>



Four bedroom property in a great Uphill location, close to Lincoln Bishop University and walkable distance to University of Lincoln and Lincoln County Hospital. Spacious lounge and modern kitchen and modern shower room. Outside has an enclosed garden.

Gas central heating. No parking included, streets in the local area benefit from unrestricted on-street parking.

Price displayed is as per person per month

The deposit payable on the first day of your tenancy is just ****£200.00**** per person along with the first months' rent.

The property comes furnished and includes utilities and associated building running costs, including TV licence, Broadband and Council Tax. Utilities (gas, electric and water) are subject to a fair usage policy as detailed in the attached brochure and the Tenancy Agreement.

Don't miss out on this great property. Contact our friendly team at Cloud Lettings today to arrange your viewing or book a slot online for a time convenient to you!

Call - 01522 802020

email - info@cloudlettings.co.uk

WhatsApp - 07908 557770

The rent as advertised per week is the rent due per person for a student studying a full-time course with at least 21 hours of study in term time per week attending 24 weeks per annum.

The property comes furnished and includes utilities and associated building running costs, including TV licence and Broadband. Utilities are subject to a fair usage policy as detailed in the attached brochure and the Tenancy Agreement.

Cloud Lettings are a member of the Tenancy Deposit Scheme, ARLA, The Property Ombudsman, and are part of the Propertymark Client Money Protection scheme. Cloud Lettings are also an Associate Agent of the City of Lincoln Trusted Landlord Scheme.

For further details of all tenancy fees, please see our website here:
<http://www.cloudlettings.co.uk/about>

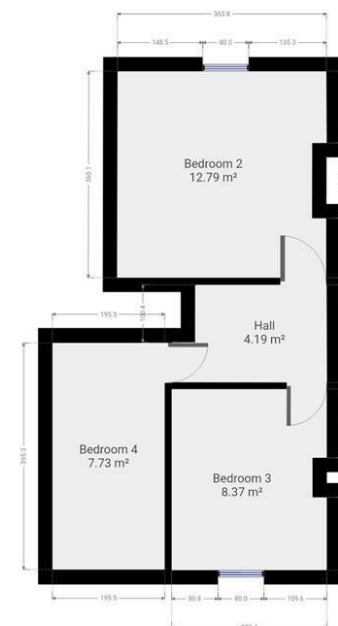
Any information collected from you will be processed in accordance with the General Data Protection Regulation. Full details of how Cloud Lettings Ltd process your information can be found on our website here: <http://www.cloudlettings.co.uk/about-cloud-lettings/privacy-policy/>.

Terms and conditions apply. Contact the office for more information.





Floor plan measurements are approximate and for illustrative purposes only. While we do not doubt the floor plans accuracy, we make no guarantee, warranty or representation as to the accuracy and completeness of the floor plan. You or your advisors should conduct a careful, independent investigation of the property to determine to your satisfaction as to the suitability of the property for your special requirements.



Floor plan measurements are approximate and for illustrative purposes only. While we do not doubt the floor plans accuracy, we make no guarantee, warranty or representation as to the accuracy and completeness of the floor plan. You or your advisors should conduct a careful, independent investigation of the property to determine to your satisfaction as to the suitability of the property for your special requirements.

Room size measurements are achieved by measuring between internal walls.

Where sloped ceilings are present, room size is measured where the height is a minimum of 1.5m